

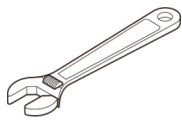
# Kitchen Faucet Installation Manual

Thank you for selecting our faucet! This installation manual lists 4 types of kitchen faucets.

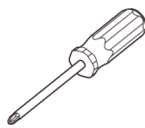
## Tools you may need



Hex Wrench



Adjustable Wrench



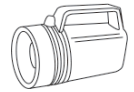
Screwdriver



Bucket



Safety Goggles



Flashlight

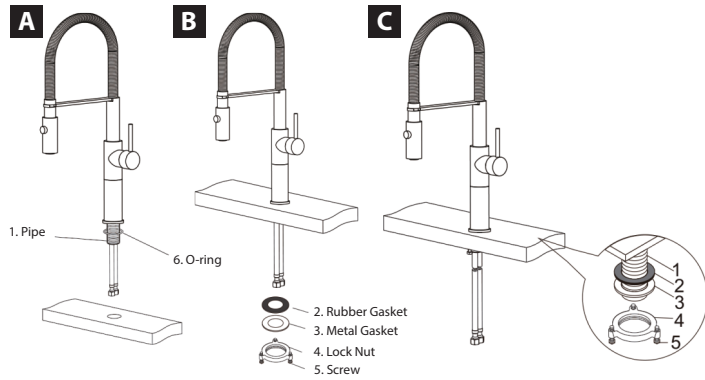
## WARNING

- To reduce the risk of injury or property damage, read all instructions before installing product.
- Wear safety goggles.
- Product must be installed in accordance with all state & local plumbing & building codes.
- Call a professional if you are uncertain about installing this product.

## Maintenance

- Operate the faucet gently in order for a sustainable use.
- Always blot dry any water from faucet surface. Clean with a damp non-abrasive sponge and wipe it with a clean soft cloth should be helpful to maintain good finish of the faucet. To remove water spots, please apply warm water and a damp soft cloth. Make certain to rinse thoroughly with water immediately after cleaner.
- Although the finish is extremely durable, it can be damaged by some cleaners. Do not use detergent powder, polishing powder, granular detergent or nylon brush to clean.
- Do not use acidic detergents. If happened, it must be rinsed properly and wiped dry with a soft cloth.
- When the air temperature is below 0 °C; a measure should be taken to keep the faucet working condition warm.
- Shut off the water supply valves when the faucet will not be in use for an extended amount of time.
- We reserve the right to make revisions in the design of faucets without notice.
- If water pressure or spray pattern beings to change remove spray head and check and clean the filter.

## Regular Faucet

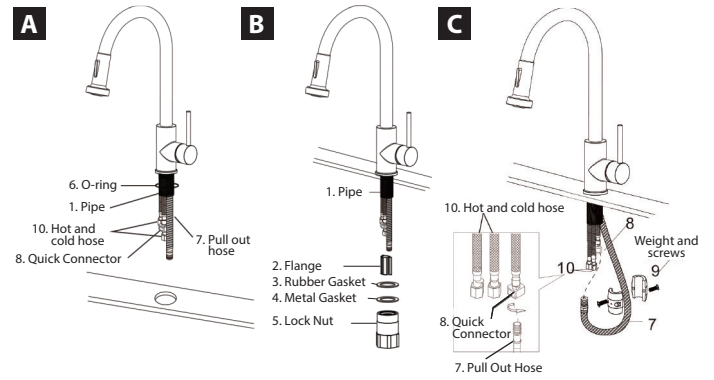


- A**
- Screw pipe(1) on the faucet.
  - Place O-ring(6) below the faucet.
  - Screw hot & cold hoses on the faucet.
  - Put the faucet and hoses into the hole.

- B**
- Place rubber gasket(2), metal gasket(3) and lock nut(4) onto the pipe.
  - Connect water supply (not included) on the hot & cold hoses.

- C**
- Turn on the hot & cold water supply.
  - Check for leakages.
  - Turn on the faucet for at least one minute before use or drink.

## Pull Down/Out Faucet

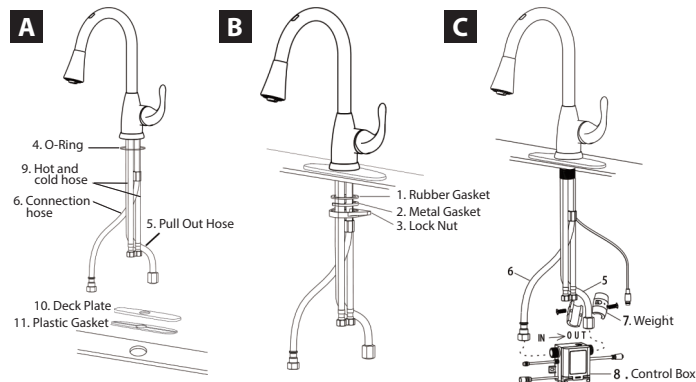


- A**
- Screw pipe(1) on the faucet.
  - Place O-ring(6) below the faucet.
  - Screw hot & cold hoses on the faucet.
  - Put the faucet and hoses into the hole.

- B**
- Put the flange(2) into the pipe to fix the hoses.
  - Place rubber gasket(2), metal gasket(3) and lock nut(4) onto the pipe.

- C**
- Connect pull out hose(7) with quick connector(8).
  - Screw the weight and screws(9) on the pull out hose(7).
  - Connect water supply (not included) on the hot & cold hoses(10).
  - Turn on hot & cold water supply and check for leakages.
  - Turn on the faucet for at least one minute before use or drink.

## Sensor Faucet

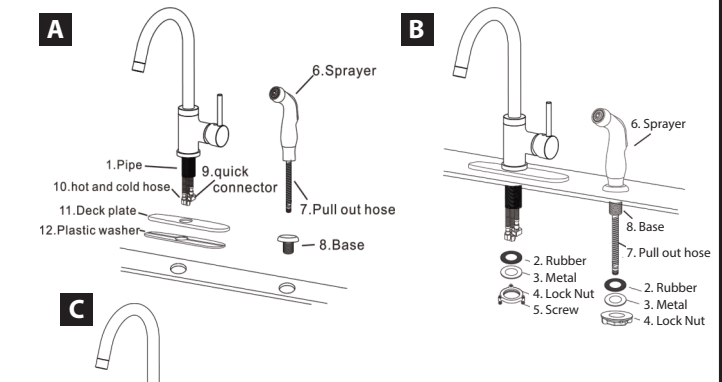


- A**
- Place O-ring(6) below the faucet.
  - Screw hot & cold hoses on the faucet.
  - Put the faucet and hoses into the hole.

- B**
- Place rubber gasket(2), metal gasket(3) and lock nut(4) onto the pipe.

- C**
- Connect the connection(6) to the inlet ("IN") of the control box(8).
  - Connect the pull out hose(5) to the outlet ("OUT") of the control box(8).
  - Screw the weight and screws(9) on the pull out hose(5).
  - Connect hot & cold water supply to hot & cold hoses(9).
  - Turn on the hot & cold water supply.
  - Check for leakages.
  - Turn on the faucet for at least one minute before use or drink.

## Faucet With Side Sprayer



- A**
- Screw pipe(1) on the faucet.
  - Screw hot&cold hoses(10) on the faucet.
  - Put the faucet and hoses into the deck plate(11), plastic gasket(12) and hole.

- B**
- Put the sprayer(6) and pull out hose(7) through the base.
  - Place rubber gasket(2), metal gasket(3) and screw lock nut(4) onto the pipe.
  - Connect water supply (not included) on the hot & cold hoses.

- C**
- Connect pull out hose(7) with quick connector(9).
  - Connect and turn on the hot & cold water supply.
  - Check for leakages.
  - Turn on the faucet for at least one minute before use or drink.